

Port of Fowey Racing

SAILING INSTRUCTIONS 2011

ROYAL FOWEY YACHT CLUB

Tel: 01726 833573

FOWEY GALLANTS SAILING CLUB

Tel: 01726 832335

1. **Rules**

- 1.1 Racing will be governed by the rules as defined in the Racing Rules of Sailing.
- 1.2 The Fowey Harbour Byelaws and Notices to Mariners published by the Fowey Harbour Commissioners (FHC) apply within the harbour. (The Byelaws are available from FHC or www.foweyharbour.co.uk/pdf/byelaws.pdf.) Boats failing to observe these rules or obey verbal instructions from safety boats or FHC staff will be disqualified without a hearing.
- 1.3 The IRC Rules 2011 Parts A, B and C shall apply.

2. **Notices to Competitors**

Notices to competitors will be posted on the official notice boards located at the RFYC.

3. **Changes to Sailing Instructions**

Any changes to the Sailing Instructions will be posted a minimum of one hour before the scheduled starting time of the race, or races, affected, except that any change to the schedule of races will be posted by 20.00hrs on the day before it will take effect.

4. **Signals Made Ashore**

Signals made ashore will be displayed from the flagstaff or race office at RFYC when starting Lines One or Three are being used or from the flagstaff at FGSC when starting Line Two is being used.

5. **Schedule of Races**

- 5.1 The Sailing Calendar is published on a card available from RFYC and FGSC and on the website of both clubs. It is also on page 5 of the Sailing Instructions.
- 5.2 The Schedule of Race Series is on page 4 of the Sailing Instructions.

6. **Class Flags**

Class flags are as listed in the Notice of Race.

7. **Racing Areas, Marks and Courses**

- 7.1 The racing areas and marks will be as described in Appendices 1 and 2.
- 7.2 The course and number of laps to be sailed by each class will be signalled on boards displayed by the race office. (Except for Cruisers Wednesday Series – see 7.3)
The class will be indicated by a white board with the class sign in black preceding the relevant course.
The course will be indicated by lettered boards, a green background for marks to be left to starboard and a red background for marks to be left to port. All marks are to be rounded save those on the relevant background with the letter underlined in white which are to be passed only.
The number of laps, if more than one, will be indicated by a white board with a black number immediately following the series of marks that are to be rounded more than once.
- 7.3 For Cruisers Wednesday Series the course for each class will be displayed on boards on the committee boat as described in 7.2 above.
- 7.4 Long distance races for Troys, Dinghy Handicap class F and Fowey Rivers will be signalled by flag D displayed on the RFYC flagstaff.
- 7.5 Supplementary Sailing Instructions for Coastal and Channel races for Cruisers are available from RFYC and on the website of both clubs.

8. **The Start**

- 8.1 Races will be started using rule 26 (except for pursuit races – see 8.4 below):
- 8.2 An attention signal (orange flag or amber light with one sound) will be displayed five minutes before the warning signal for the first class to start.
- 8.3 Races started on Line One will use the Starting Light System as described in Appendix 3.

- 8.4 **Pursuit start races** - start times in the Schedule of Race Series are for boats with a PYS of 1000. All start times will be posted on the official notice board a minimum of 24 hours before the scheduled start time. No starting flags, lights, sounds or individual recalls will be used for these races; boats should start according to their published start times. Boats that start prematurely will be penalised by having ten times the difference between their actual starting time and their published starting time added to their elapsed time for the race.
- 8.5 **Starting Lines**
Line One – a line extending from a transit formed by a white triangle with orange border on the buildings behind the race office and the RFYC flagstaff limited by starting mark B as an outer distance mark.
Line Two - a line extending from the transit marks at FGSC.
Line Three - a line between the mast of the committee boat and either a yellow inflatable outer distance starting mark or an adjacent course starting mark outside the harbour entrance. If flag H is displayed ashore the starting line will be laid inside the harbour. An announcement may also be made on VHF Channel M2.
- 8.6 Start Line One only. If flag O is displayed with two sound signals prior to the attention signal, competitors shall not enter the moorings on the Fowey side of the harbour until they have started.
- 8.7 To register as a starter on Line Three all competitors shall report to the committee boat by passing it on the opposite side from the starting line. Thereafter they shall keep clear of the line until their preparatory signal.
9. **Shortening/Changing the Course**
- 9.1 If a committee boat displays flag C with a repetitive sound signal the course shall be changed and boats shall round the adjacent mark of the course and proceed directly to the designated finishing line. This is additional to rule 32.2 and 33 and alters the meaning of Race Signal flag C.
- 9.2 For all Cruiser series the course may be changed and shortened by an announcement on VHF Channel M2 stating the mark of the course to be rounded before boats proceed directly to finish on Line One. This is additional to rules 32.2, 33 and Sailing Instruction 9.1.
10. **The Finish**
- 10.1 **Finishing lines**
Line One – a line between RFYC flagstaff and the seaward side of mark B.
Line Two – a line extending from the transit marks at FGSC.
Line Three – a line between the mast of a committee boat displaying a blue flag and the last mark designated in the course for each class. If a committee boat is not on station at this mark the race will be finished on Line One.
- 10.2 Polkerris race (Short race S2-3) finishing line will be when Mark M bears due south magnetic. Competitors shall record their own finishing times on the official declaration form available from the race office and hand it to the RFYC or its representative by 18.00hrs on the Wednesday following the race to be valid.
- 10.3 Special Pursuit Series. The races will be finished as close to an elapsed time of 90 minutes as possible for boats with a PYS of 1000. A committee boat flying flag S will be stationed on the rhumb line of the course to the next buoy and finish the leading boat when it crosses a line at right angles to the rhumb line at the committee boat. Thereafter the committee boat will proceed back along the rhumb line between marks of the course finishing competitors on the same basis. Note that on a beat this may not accurately reflect a boat's relative position in the race and competitors should sail a course accordingly.
11. **Self Regulation for Cruisers**
For Cruisers Short Series (S1 and S2) on Friday evenings no race officers will be available and the race will be "self regulated" by the competitors. A nominated boat in each class should set the course, count down the start and note any boats over the line. All boats should record their own finishing times which should be collated and passed to the RFYC race office no later than 12.00hrs on the following Sunday.
12. **Time Limits**
- 12.1 Time limits will be as given in the Schedule of Race Series.
- 12.2 For all races (except Coastal and Channel races for Cruisers) if one (or more) boats finish within the time limit, the time limit will be extended by half an hour. Boats failing to finish within the time limit will be scored *Did Not Finish*. This changes rule 35.
- 12.3 Time limits for Coastal and Channel races are in the supplementary Sailing Instructions available from RFYC and on the website of both clubs.
13. **Protests and Requests for Redress**
- 13.1 The Exoneration Penalty, Advisory Hearing and RYA Arbitration of the RYA Rules Disputes Procedures will be available. See official notice board at RFYC for details.

- 13.2 Protest forms are available at the race office. Protests and requests for redress shall be delivered there within the protest time limit.
- 13.3 For races finishing at Fowey, the protest time limit is 90 minutes after the last boat has finished the last race of the day. For races finishing at ports other than Fowey, the protest time limit is 18.00hrs on the Wednesday following the race.
- 13.4 Notices will be posted within 24 hours of the protest time limit to inform competitors of hearings in which they are parties or named as witnesses. Hearings will be held at RFYC at the time stated on the notice.
- 13.5 Notices of protests by the race committee will be posted to inform boats under rule 61.1(b).

14. Scoring

- 14.1 For all series (except as in 14.2 below or as otherwise specified) the number of races to count for the series will be calculated as two thirds the number of races actually held, any fractions being rounded up to the next whole number.
- 14.2 For the Cruisers Short Series the number of races to count will be half the number of races actually held, any fractions being rounded up to the next whole number.

15. Handicaps

- 15.1 Handicap racing will be organised using the RYA Portsmouth Yardstick System set out in the current YR2 (applying the handicapping policy of PORFOC) or the IRC Rule 2011.
- 15.2 Portsmouth Numbers will be those published by the Race Committee at least one hour prior to the start of the race or the first of a series of races.
- 15.3 Yachts without Portsmouth Numbers published in the current YR2 or without an established club number will be allocated numbers by use of the Trial Number method described in Appendix 1 of the current YR2.
- 15.4 If any alteration likely to affect the handicap is made (eg: changes to sail plan, rig, mast, ballast, trim, engine or propeller), POFROC shall be advised immediately.
- 15.5. Portsmouth Numbers will not be adjusted during any series of races.
- 15.6 Queries on handicaps should be submitted in writing to POFROC.
- 15.7 Boats in the IRC class shall submit a copy of their current IRC Rating Certificate with their entry for the season's racing.

16. Safety Regulations

- 16.1 **Identification.** Sail numbers are compulsory and shall be the same as on the entry form. Cruisers shall fly the appropriate class flag.
- 16.2 **Personal flotation devices.** Rule 40, personal flotation devices, shall apply to all Troy and Dinghy competitors whilst racing without the display of flag Y. This requirement alters rule 40.
- 16.3 **Alternative means of propulsion.** All boats shall have an effective alternative means of propulsion for safety purposes.
- 16.4 **Special conditions for cruisers.**
- 16.4.1 Cruisers shall comply with ISAF Offshore Special Regulations for Category 4 Monohulls.
- 16.4.2 Cruisers shall be registered with the MCA Voluntary Safety Identification Scheme. (CG66)
- 16.4.3 Use of the SEA Check Service offered by the RNLI is recommended.
- 16.5 **Retirements.** A boat that retires from a race shall notify the race committee as soon as possible by one of the following means: visual, oral or radio message to a committee boat, safety boat or the race office; telephone call to the race office (01726 832245/833573); the club at the finishing port.
- 16.6 Changes of port destination should be notified to the Coastguard by VHF radio.
- 16.7 Competitors having retired should endeavour not to pass through the finishing line.
- 16.8 **Failure to notify retirement may result in disqualification from the series.**
- 16.9 Committee boats, safety boats and the race office all operate on VHF Channel M2.

17. Disclaimer of Liability

Competitors participate in the Port of Fowey Racing entirely at their own risk. See rule 4, Decision to Race. The joint organising authorities will not accept any liability for material damage or personal injury or death sustained in conjunction with or prior to, during, or after any race.

18. Insurance

Each participating boat shall be insured with valid third-party liability insurance with a minimum cover of £2,000,000 per event or the equivalent.

SCHEDULE OF RACE SERIES 2011

Spring Series – Cruisers, Dinghies and Fowey Rivers

Pursuit start races for Cruisers Class 1 & 3 combined using PYS handicap based on 100 mins*. Elapsed times will be corrected. Handicap racing for Dinghies and Fowey Rivers combined.

Class	Wednesday		Saturday	
	start time	time limit	start time	time limit
Cruisers 1 & 3	18.00 *	20.30	14.00 *	17.30
F, K & FR	18.30	20.30	14.30	17.00

* for 1000 PYS

Starting Line One. Finishing Line One.

Wednesday Series 1 (S1) and Series 2 (S2) – Cruisers

Handicap racing for Classes 1 & 3. Start: Class 1 18.25, Class 3 18.30. Time limit 20.30.

Starting Line Three. Finishing Line Three.

Special Pursuit Series

Pursuit start races for Cruisers Class 1 & 3 combined using PYS handicap based on 90 mins for 1000 PYS. Elapsed times will NOT be corrected.

Start 18:00 (1000 PYS).

Starting Line Three – see Sailing Instruction 8.4. Finish – see Sailing Instruction 10.3

Friday and Saturday Short Series 1 (S1) and Series 2 (S2) – Cruisers

Handicap racing for Classes 1 & 3.

Series 1 (S1) and Series 2 (S2): Start: Class 1 18.25, Class 3 18.30. Time limit 20.30.

Except: Race (S1)1 Start: Class 1 10.40, Class 3 10.45. Time limit 13.30.

Race (S2)3 (Polkerris). Start: Class 1 10.20, Class 3 10.25. Time limit 13.30.

Two-handed series (Selbie Cup) and Ladies Helm. Handicap races for Classes 1 & 3. Start: Class 1 14.00, Class 3 14.05. Time limit 17.30.

Starting Line One. Finishing Line One (except Polkerris races – see Sailing Instructions 10.2)

Opal Series – Cruisers

Pursuit start races for Cruisers Class 1 & 3 combined using PYS handicap based on 150 mins for 1000 PYS. Elapsed times will be corrected. Start 13.45 (1000 PYS). Time limit 17.30.

Starting Line One. Finishing Line One.

First Series (FS) and Second Series (SS) – Troys, Dinghies and Fowey Rivers

Includes Long Distance races (except Dinghy Class K) and Crews races.

Class racing for Troys and Fowey Rivers, handicap racing for Dinghies

Class	Wednesday		Saturday	
	start time	time limit	start time	time limit
T	18.20	20.30	14.20	17.00
F & FR	18.25	20.30	14.25	17.00
K	18.30	20.30	14.30	17.00

Time limit for Long Distance races: 18.00

Starting Line One. Finishing Line One.

Sunday Races – Troys, Dinghies and Fowey Rivers

Swap Helm (Troys). Start 10.30. Time limit 12.55. Ladies Race Start: 14.00. Time limit 16.30.

Starting Line One. Finishing Line One

Polkerris race (T and FR) and Polperro race (T). Start 10.30 (T) and 10.35 (FR). Time limit 14.00.

Starting Line One.

Fishermans Arms race (Troys, Dinghies and Fowey Rivers). Start 11.00. Time limit 14.00.

Starting Line Two.

Autumn Series (AS) – Troys, Dinghies and Fowey Rivers

Class racing for Troys and Fowey Rivers, handicap racing for Dinghies.

Class	Wednesday		Saturday	
	start time	time limit	start time	time limit
T	18.20	19.30	14.20	17.00
F & FR	18.25	19.30	14.25	17.00
K	18.30	19.30	14.30	17.00
T (up Anchor) ---	---	---	14.30	17.00

Starting Line One. Finishing Line One.

FOWEY SAILING CALENDAR 2011

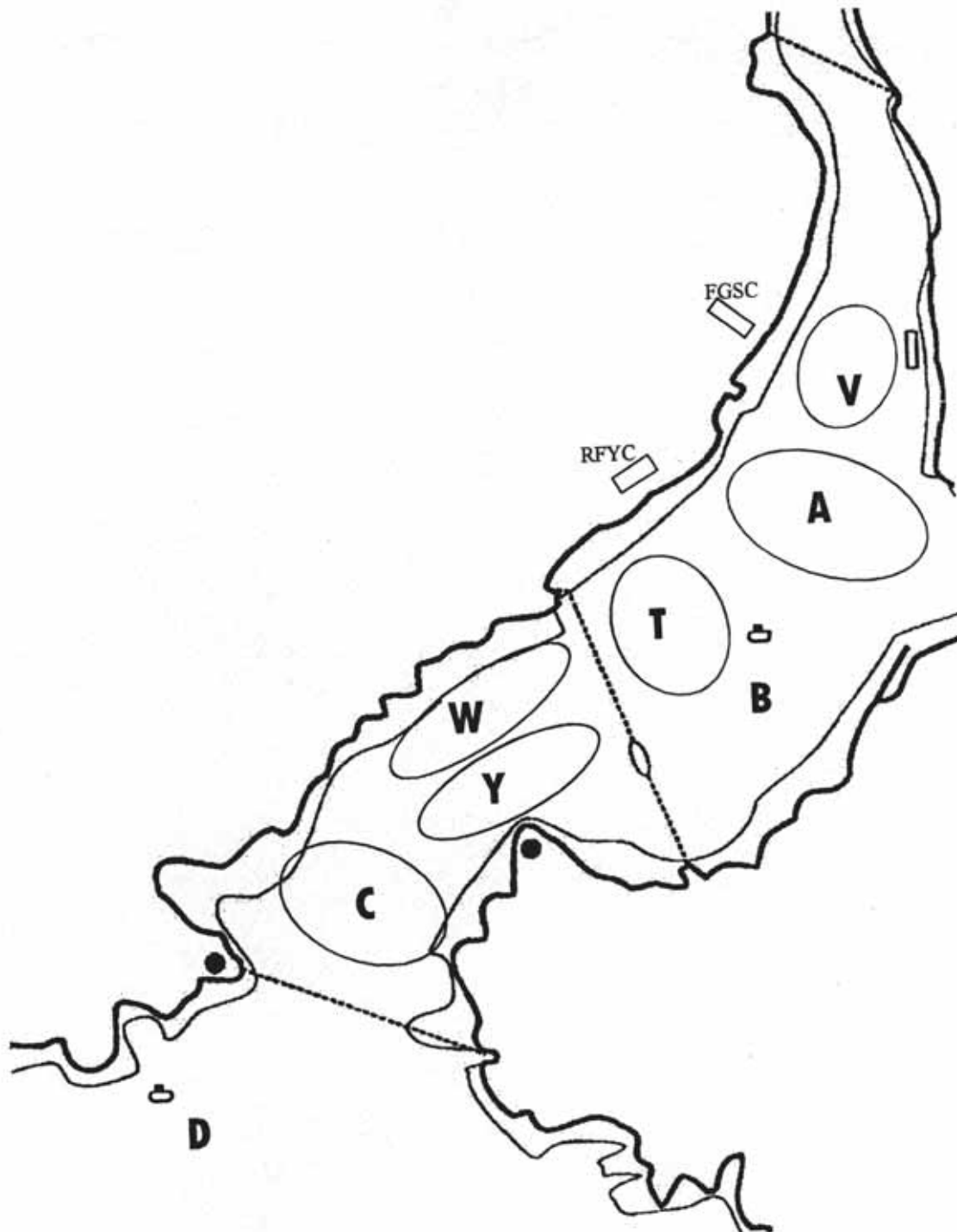
	CRUISERS	COASTAL/EVENTS	TROYS	DINGHIES K & F	FOWEY RIVERS	ROI/Afloat RO
April	(Easter Sun 24/4)					
Wed 13	Spring Series 1			Spring Series 1	Spring Series 1	RFYC Commodore
Sat 16	Spring Series 2			Spring Series 2	Spring Series 2	FGSC Commodore
Wed 20	Spring Series 3			Spring Series 3	Spring Series 3	J Vivian
Sat 23	Spring Series 4			Spring Series 4	Spring Series 4	T Owen
Wed 27	Spring Series 5			Spring Series 5	Spring Series 5	C Morgan
Sat 30	Spring Series 6			Spring Series 6	Spring Series 6	P Toms
May	(Bank Holidays 2/5 and 30/5)					
Sun 1		Alan Cumings Trophy Finish *				
Mon 2	Short (Series 1) 1	Alan Cumings Trophy Start *				C Morgan / P Dixon
Wed 4	Wed (Series 1) 1			First Series Wed 1	First Series Wed 1	P Siddall / A Toms
Fri 6	Short (S1) 2					Self Regulated (SR)
Sat 7		COGS 1 Falmouth - Fowey *	FSS 1 (Sid Hunkin Cup)	First Series Sat 1	First Series Sat 1	W Earl
Wed 11	Wed (S1) 2		FSW 1	FSW 2	FSW 2	J Earee / F Stephens
Fri 13	Short (S1) 3					SR
Sat 14	Two Handed Series 1		FSS 2 (TO1)	FSS 2	FSS 2 (JC Cup)	M Crowle
Wed 18	Wed (S1) 3		FSW 2	FSW 3	FSW 3	P deG-Warter / P Cooke
Fri 20	Short (S1) 4					SR
Sat 21	Two Handed Series 2		FSS 3 (AB1)	FSS 3	FSS 3 (Mitchell Cup)	C Biggs
Wed 25	Wed (S1) 4		FSW 3	FSW 4	FSW 4	B Baxter / M Brooke
Fri 27	Short (S1) 5					SR
Sat 28		Coastal 1 - St Mawes	FSS 4 (TO2)	FSS 4	Fowey River Regatta pm *	D Barnett
Sun 29		COGS 2 Gull Rock *	Swap Helm am & Ladies Race pm		Fowey River Regatta am & pm *	P Toms
Mon 30			Bank Holiday Races am & pm	Bank Holiday Races am & pm	Fowey River Regatta am & pm (Fifty Cup) *	R Long am / T Owen pm
June						
Wed 1	Wed (S1) 5		FSW 4	FSW 5	FSW 5	L Brice / M Goble
Fri 3	Short (S1) 6					SR
Sat 4		COGS 3 Plymouth - Fowey *	FSS 5 (TO3)	FSS 5	FSS 4	D Guy
Sun 5		PIPS to Plymouth *				C Morgan
Wed 8	Wed (S1) 6		FSW 5	FSW 6	FSW 6	P Hadley / C Harding
Fri 10	Short (S1) 7					SR
Sat 11		Coastal 2 - Newton Ferrers	FSS 6 (AB2)	FSS 6	FSS 5	J Barwell am / J Eaton pm
Wed 15	Wed (S1) 7		FSW 6	FSW 7	FSW 7	G Slack / J Hoddinott
Fri 17	Short (S1) 8					SR
Sat 18		COGS 4 St Mawes - Fowey *	FSS 7 (TO4)	FSS 7	FSS 6	J Forsyth
Sun 19				← RUSTY JUNIOR REGATTA * →		FGSC
Wed 22	Wed (Series 2) 1		FSW 7	FSW 8	FSW 8	A Toms / P Keilbart
Fri 24	Short (S1) 9					SR
Sat 25		Coastal 3 Fowey - Saltash	Long Distance (or FSS 8)	Long Distance (or FSS 8)	Long Distance (or FSS 7)	C Morgan am / B Appleton pm
Wed 29	Wed (S2) 2		FSW 8	FSW 9	FSW 9	S Wilkinson / R Kirkham
July						
Fri 1	Short (Series 2) 1	Channel Race Cruiser Rally L'Aberwrach				C Morgan
Sat 2		COGS 5 Helford - Penzance *	FSS 8 or 9 (TO5)	FSS 8 or 9	FSS 7 or 8	A Mercer
Wed 6	Wed (S2) 3		Second Series 1	Second Series 1	Second Series 1	S Heap / R Kittow
Fri 8	Short (S2) 2					SR
Sat 9			SS 2 (AB3)	SS 2	SS 2	G Cousins
Sun 10	Short (S2) 3 Polkerris Race		Polkerris Race (10:30 start)		Polkerris Race (10:35 start)	J Vivian
Wed 13	Wed (S2) 4		SS 3	SS 3	SS 3	D Doidge-Harrison / P Dixon
Fri 15	Short (S2) 4					SR
Sat 16			SS 4 (TO6)	SS 4	SS 4	K Ogg
Wed 20	Wed (S2) 5 RNLI Pennant		SS 5	SS 5	SS 5	D Rundle / C Norris
Fri 22	Short (S2) 5					SR
Sat 23	Two Handed Series 3		Long Distance (or SS 6)	Long Distance (or SS6)	Long Distance (or SS 6)	R Slack
Sun 24			← Fisherman's Arms Race (11:00 start) →			J Penprase
Tues 26		JOG Finish Fowey *				C Morgan
Wed 27	Wed (S2) 6	JOG Start Falmouth *	SS 7	SS 7	SS 7	A Alexander / C Ogg
Fri 29	Short (S2) 6					SR
Sat 30	Ladies Helm		Long Distance (or SS 8)	Long Distance (or SS 8)	Long Distance (or SS 8)	M Lewis
August	(Bank Holiday 29/8)					
Wed 3	Wed (S2) 7	Fowey Classics *	SS 9	SS 9	SS 9	J Staughton & crew
Fri 5	Short (S2) 7					SR
Sat 6	Two Handed Series 4		SS 10 (TO7)	SS 10	Ladies Helm	R Rowe
Sun 7			Polperro Race (10:30 start)			P Toms
Wed 10	Wed (S2) 8		SS 11	SS 11	SS 10	D Phyll & crew
Fri 12	Short (S2) 8					SR
Sat 13			Turpin Cup	SS 12	Fowey River Class Cup	P Benton
Sun 14		Fowey - Flushing				C Morgan / J Vivian
Mon 15		Falmouth - Fowey				Regatta Team
FOWEY ROYAL REGATTA						
14-20 August						
Sat 20			← Children's Race am →			FGSC Commodore
Wed 24	Special Pursuit 1		Autumn Series 1	Autumn Series 1	Autumn Series 1	R Davis / B Runnalls
Fri 26	Short (S2) 9					SR
Sat 27	Two Handed Series 5		AS 2 (AB4)	AS 2	AS 2	K Toms
Mon 29			← Polruan Regatta am only * →			G Tyson & R Morgan
Wed 31	Special Pursuit 2		AS 3	AS 3	AS 3	S MacNab / R Kirkham
September						
Fri 2	Short (S2) 10					SR
Sat 3			AS 4	AS 4	AS 4	D Cowie
Wed 7	Special Pursuit 3		AS 5	AS 5	AS 5	G Slack / R Pearce
Sat 10		COGS 6 & Coastal 4 Fowey - Helford *	Crews Race	AS 6	Crews Race	T Owen am / B Barclay pm
Wed 14			AS 6	AS 7	AS 6	J Penprase
Sat 17	Opal 1		AS 7 (TO8) (14:30 start)	AS 8 (start + 10mins)	AS 7 (start + 10mins)	T Owen
Sat 24	Opal 2		Up Anchor (14:30 start)			A Mitchell
October						
Sat 1	Opal 3					C Morgan
Sat 8	Opal 4					R Morgan
Sat 15	Opal 5					C Norris
Sat 22	Opal 6 & Supper					A Toms

Please note - Races/Events marked with * are not organised by POFROC and will have different entry requirements and sailing instructions.
 - The Cruisers Short Series 1 and 2 do not have a Race Officer and are Self Regulating (SR). See sailing instruction 11.

Appendix 1

Racing Area and Marks for In-Harbour courses

This chart indicates the areas in which the in-harbour marks will be laid



Description of Marks

Mark B – Silver Turning Buoy off RFYC.

Marks A, C, T, V, W & Y – "pipe" buoys with flag topmarks.

Outside harbour marks are as described in Appendix 2.

Navigation

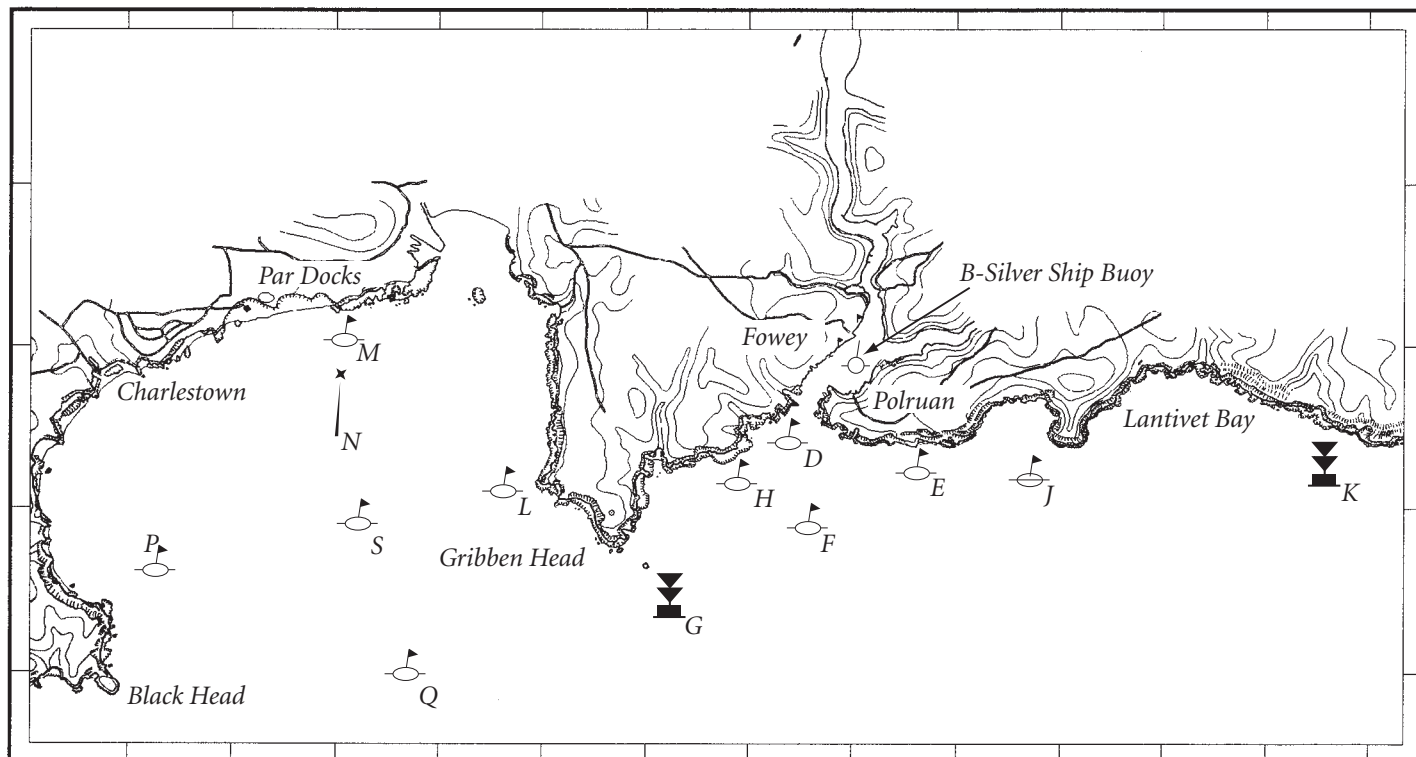
Passage between Punches Cross and the eastern shore and Lamp Rock and the eastern shore is forbidden as is passage between Cannis Rock and the adjacent shore.

Cannis Rock Buoy is to be passed on its correct navigational side unless designated as a mark of the course.

Appendix 2

Racing Area and Marks for Offshore Courses

This chart must not be used for navigation.
The position of marks is for identification only



Description of Marks and Approximate Positions

D	St Austell Brewery "Tribute"	50° 19.5'	4° 38.8'	Yellow Spherical buoy
E	Mitchell Sails	50° 19.3'	4° 37.9'	Yellow Spherical buoy
F	Dinghy South	50° 19.0'	4° 38.5'	Yellow inflatable
G	Cannis Rock Buoy	50° 18.35'	4° 39.9'	IALA South Cardinal buoy
H	Four Turnings Garage	50° 19.2'	4° 39.33'	Yellow Spherical buoy
J	The Other Place	50° 19.1'	4° 36.37'	Yellow Spherical buoy
K	Udder Rock Buoy	50° 18.9'	4° 33.8'	IALA South Cardinal buoy
L	Stephens & Scown Solicitors	50° 19.1'	4° 41.4'	Yellow Spherical buoy
M	The Beach	50° 20.0'	4° 42.8'	Yellow Spherical buoy
N	Bay Buoy	50° 19.53'	4° 43.1'	IALA Yellow Special buoy
P	Fowey Sea Farms	50° 18.5'	4° 44.7'	Yellow Spherical buoy
Q	Bennett Jones Chartered Accountants	50° 18.0'	4° 42.5'	Yellow Spherical buoy
S	Toll Bar Restaurant	50° 18.9'	4° 42.8'	Yellow Spherical buoy

Mark B – Silver Turning Buoy off RFYC.

Navigation

The Cannis Rock and Udder Rock Buoys are to be passed on their correct navigational sides, unless designated as marks of the course. Passage between the Cannis Rock and the adjacent shore is forbidden.

POFROC and all competitors are appreciative of our sponsors without whom use of the new buoys would not be possible.

Appendix 3

Starting Light System (SLS)

- 1.1 Races started on Line One will use the Starting Light System as described below. This changes rule 26.
- 1.2 If the Starting Light System is inoperative the flag signals of rule 26 will be used signalled by flag A displayed on the RFYC flagstaff.

2. **The Lights Described**
 - 2.1 **Attention Signal** – Three amber lights displayed just below the yardarm on the RFYC flagstaff. Each light covers a separate sector of the harbour thus from most positions only a single amber light may be visible. The attention signal with one sound will be made five minutes before the warning signal for the first class to start.
 - 2.2 **Warning Signals** – The warning signals will be differently coloured class lights displayed along the top of the left hand window of the Race Office (as seen from the harbour). The order of lights from the upper left-hand corner will be:
 - Red – Cruiser Class 1
 - Yellow – Dinghy F and Fowey Rivers
 - White – Troys
 - Amber – Cruiser Class 3
 - Green – Dinghy KThe warning signal for each class (or classes) with one sound will be made five minutes before the starting signal.
 - 2.3 **Preparatory Signal** – The preparatory signal will be a white light displayed in the lower right-hand corner of the window. The preparatory signal with one sound will be made four minutes before the starting signal.
 - 2.4 **One-Minute** – The one-minute signal will be a white light displayed in the lower left-hand corner of the window. The one-minute signal with one sound will be made one minute before the starting signal.
 - 2.5 **Starting Signal** – The class (classes), preparatory and one-minute lights will go out simultaneously with one sound.
 - 2.6 When classes are being started at five minute intervals the warning signal for each succeeding class will be made with the starting signal of the preceding class.

3. **Individual Recall**

The individual recall signal will be the appropriate class (or classes) light(s) and one sound. The light(s) will stay on until all boats which were over the line are completely on the pre-start side of the starting line, but not later than four minutes after the starting signal.
This changes rule 29.1.

4. **General Recall**

The general recall signal will be the appropriate class (or classes) light(s) flashing and two sounds. The warning signal for a new start for the recalled class will be made one minute after the flashing light(s) goes out with one sound, and the starts of any succeeding classes will follow the new start.
This changes rule 29.2.

5. **Postponement** (For any races not started)

The postponement signal will be the amber time signal lights flashing and two sounds. The end of the postponement will be signalled by the amber lights ceasing to flash and one sound. The warning signal will be made one minute after the end of the postponement unless at that time the race is postponed again or abandoned.
This changes rule 27.3.

6. **Abandonment**

Abandonment will be signalled by flag signals as described in rules 27.3 and 32.1.